



# HILTON HEAD ISLAND AIRPORT

## Phase 1 Terminal Improvements

November 30, 2025  
Stakeholder Update



# HILTON HEAD ISLAND

— AIRPORT —

[hiltonheadairport.com](http://hiltonheadairport.com)

# KEY WORK ITEMS

(November 1 – November 30)

---

- ➔ Drywall is complete
- ➔ Acoustical ceilings are being installed
- ➔ Painting is 75% complete
- ➔ HVAC units are going through test phase for full activation
- ➔ Light fixture installation is 75% complete
- ➔ Restroom fixtures installed



# PROGRESS PHOTOS

## FRONT EXTERIOR VIEW





# PROGRESS PHOTOS

---

## FRONT EXTERIOR VIEW





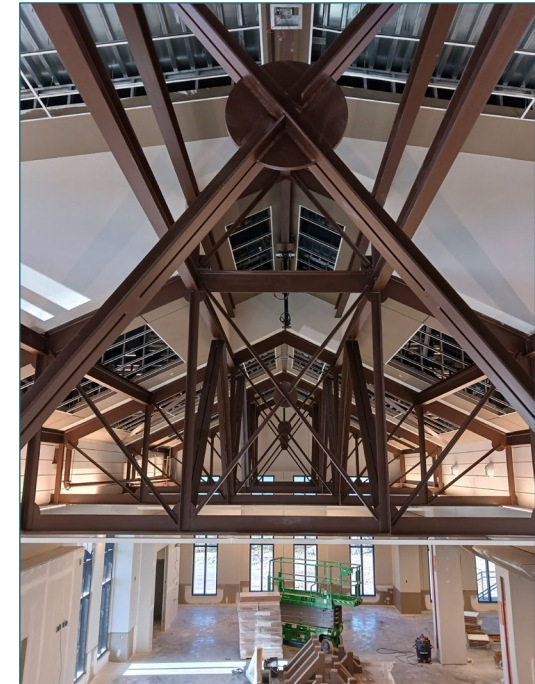
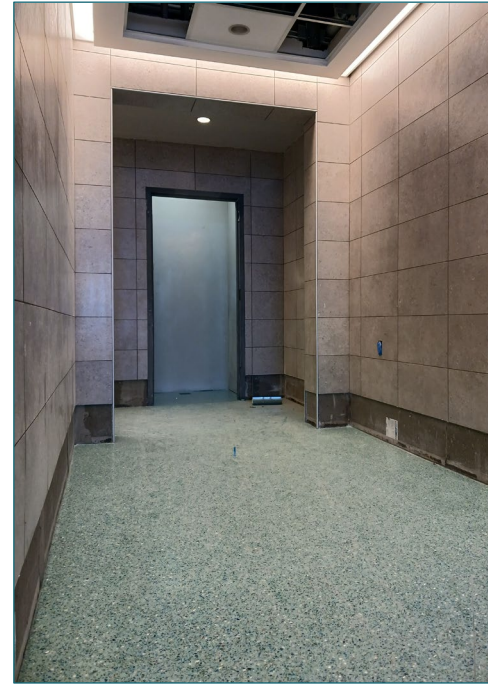
# PROGRESS PHOTOS

## INTERIOR VIEW



# PROGRESS PHOTOS

## Interior Details





# PROGRESS PHOTOS

## REAR EXTERIOR VIEW



# PROGRESS PHOTOS

---

## SIDE/REAR EXTERIOR VIEW





# MILESTONE SCHEDULE

HHIA-020 - Hilton Head Island Airport Terminal Improvements 2025 September Update						All Act																																
Activity ID	Area	Activity Name	Original Duration	Remaining Duration	Start	Finish	Free Float	Total Float	2024														2025															
									S	Oct	N	D	Jan	F	M	Apr	M	Jun	Jul	A	S	Oct	N	D	Jan	F	M	Apr	M	Jun	Jul	A	S	Oct	N	D	Jan	F
Milestones			665	127	14-Sep-23 A	22-Apr-26	0	-38																														
Contract Milestones			952	28	14-Sep-23 A	22-Apr-26	0	-54																														
No Area			952	28	14-Sep-23 A	22-Apr-26	0	-54																														
CM1000		Owner Contract Execution	0	0	14-Sep-23 A				Owner Contract Execution																													
CM1010		Notice to Proceed	0	0	01-Feb-24 A				◆ Notice to Proceed																													
CM1020		Substantial Completion	0	0		25-Mar-26	0	-54																														
CM1030		Final Completion	0	0		22-Apr-26	0	-54																														
Project Milestones			576	127	22-Jan-24 A	22-Apr-26	0	-38																														
No Area			576	127	22-Jan-24 A	22-Apr-26	0	-38																														
PM1000		New Temporary Airside Access Gate #1A Open	0	0		22-Jan-24 A			◆ New Temporary Airside Access Gate #1A Open																													
PM1010		Existing Airside Gate #1 Closure	0	0	23-Jan-24 A				◆ Existing Airside Gate #1 Closure																													
PM1020		Employee & Cell Phone Lot Closed	0	0	05-Feb-24 A				◆ Employee & Cell Phone Lot Closed																													
PM1030		Existing Baggage Canopy/Entrance Closure	0	0	26-Feb-24 A				◆ Existing Baggage Canopy/Entrance Closure																													
PM1040		Existing Baggage Canopy/Entrance Re-Open	0	0		08-Mar-24 A			◆ Existing Baggage Canopy/Entrance Re-Open																													
PM1080		Existing Ticketing Canopy/Entrance Closure	0	0	11-Mar-24 A				◆ Existing Ticketing Canopy/Entrance Closure																													
PM1050		Existing Main Ent. Canopy/Entrance Closure	0	0	21-Mar-24 A				◆ Existing Main Ent. Canopy/Entrance Closure																													
PM1070		Existing Main Ent. Canopy/Entrance Re-Open	0	0		29-Mar-24 A			◆ Existing Main Ent. Canopy/Entrance Re-Open																													
PM1090		Existing Ticketing Canopy/Entrance Re-Open	0	0		29-Mar-24 A			◆ Existing Ticketing Canopy/Entrance Re-Open																													
PM1060		Public Parking Partial Closure	0	0	15-Jul-24 A				◆ Public Parking Partial Closure																													
PM1110		Traffic Shift to Outside West/South Entrance Road Realignment	0	0		15-Jul-24 A			◆ Traffic Shift to Outside West/South Entrance Road Realignment																													
PM1130		Traffic Shift to North Lanes Entrance Road Realignment	0	0		18-Nov-24 A			◆ Traffic Shift to North Lanes Entrance Road Realignment																													
PM1120		East Airside Gate #32 Closure	0	0		13-Dec-24 A			◆ East Airside Gate #32 Closure																													
PM1180		Dry In	0	0		22-Mar-25 A			◆ Dry In																													
PM1140		Public Parking Re-Open	0	0		29-Jul-25 A			◆ Public Parking Re-Open																													
PM1190		Permanent Power	0	0		08-Sep-25 A			◆ Permanent Power																													
PM1200		Conditioned Air	0	0		21-Oct-25	0	-31	◆ Conditioned Air																													



# COORDINATION/LOOK-AHEAD ITEMS

---

- ❖ Terrazzo flooring – through December
- ❖ Exterior trim, painting final areas
- ❖ Procurement of digital displays, IT systems, FF&E
- ❖ Passenger Boarding Bridges – January arrival





# Coming soon...

